

# USER MANUAL

Thank you for purchasing our products, please take some minutes to read this manual before operating any of these laser projectors!

PD3000-RGB	PD8000-RGB
PD4000-RGB	PD9000-RGB
PD5000-RGB	PD10000-RGB
PD6000-RGB	PD12000-RGB
PD7000-RGB	PD15000-RGB
<hr/>	
PD20000-RGB	PD25000-RGB
PD26000-RGB	PD30000-RGB
.....	

Notice  
AVOID EYE OR SKIN EXPOSURE TO  
DIRECT OR SCATTERED LIGHT  
CLASS 4 LASER PRODUCT

Manufactured/ Certified by  
Shenzhen Optlaser Technologies Co.,Ltd  
[www.optlaser.com](http://www.optlaser.com)

---

## Content

INTRODUCTION	- - - - -	2
PACKING LIST	- - - - -	2
UNPACKING INSTRUCTIONS	- - - - -	2
GENERAL INFORMATION	- - - - -	2
<i>SAFETY NOTES</i>	- - - - -	3
LASER AND SAFETY NOTES	- - - - -	4
LABELLING REFERENCE	- - - - -	5, 6
PROPER USAGE	- - - - -	7
RIGGING	- - - - -	7
OPERATIONS	- - - - -	8, 9
INTERLOCK DIAGRAM	- - - - -	10
LCD Display Setting introduction	- - - - -	11
PD3 SERIES	- - - - -	12
INTRODUCTIONS of PD3 SERIES	- - - - -	13
Specifications of PD3 SERIES	- - - - -	14
PD6 SERIES	- - - - -	15
INTRODUCTIONS of PD6 SERIES	- - - - -	16
Specifications of PD6 SERIES	- - - - -	17
PD8 SERIES	- - - - -	18
INTRODUCTIONS of PD8 SERIES	- - - - -	19
Specifications of PD8 SERIES	- - - - -	20
PD20 SERIES	- - - - -	21
Specifications of PD20 SERIES	- - - - -	22
Display mode introduction	- - - - -	23
SD Card Introduction	- - - - -	23
DMX CHART	- - - - -	24, 25
FB4 integrated Devices	- - - - -	26
INTRODUCTIONS of FB4 INTEGRATED DEVICES	- - - - -	27
INTRODUCTIONS OF RE-ALIGNMENTS. REF.	- - - - -	28, 29
Maintenance Instruction	- - - - -	30
After sale service and warranty	- - - - -	30

---

## INTRODUCTION

Thank you for purchasing our products. To optimize the performance of your laser, please read these operating instructions carefully and familiarize yourself with the basic operations of this system. These instructions contain important safety information regarding the use and maintenance of this system as well. Please keep this manual with the unit, for future reference. If you sell this product to another user, be sure that they also receive this document.

### Notice

- We are constantly striving to improve the quality of our products. As such, the content of this manual may be changed without notice.
- We have tried our best to guarantee the accuracy of this manual. If you have any questions or find any errors, please contact us directly to help correct this.

## PACKING LIST

Name	Qty(pcs)
LASER projector	1
AC power cord	1
Keys for Key switch	2
Power output connector	1
Remote Interlock connector	2
Allen key	1

## UNPACKING INSTRUCTIONS

Open the package and carefully unpack everything inside.  
Ensure all parts are present and in good condition.  
Do not use any equipment that appears to be damaged.  
If any parts are missing or damaged then please immediately notify your carrier or local distributor.

## GENERAL INFORMATION

The following chapters explain important information about lasers in general, basic laser safety and some tips about  
how to use this device correctly. Please read this information as it contains critical information you must be aware of, prior to using this system.

---

## **SAFETY NOTES**

**WARNING!** This projector is a Class 4 laser product. It must never be used for audience-scanning applications. The output beam of the projector must always be at least 3 meters above the floor in the audience. See the Operating Instructions section for further information.

Please read the following notes carefully! They include important safety information about the installation, usage, and maintenance of this product.

- Keep this User Manual for future consultation. If you sell this product to another user, be sure that they also receive this document.
- Always make sure that the voltage of the outlet to which you are connecting this product is within the range stated on the decal or rear panel of the product.
- This product is not designed for use outdoors in adverse weather conditions. To prevent risk of fire or shock, do not expose this product to rain or moisture.
- Always disconnect this product from the power source before cleaning it or replacing the fuse.
- Make sure to replace the fuse with another of the same type and rating.
- If mounting it overhead, always secure this product to a fastening device using a safety chain or cable.  
In the event of a serious operating problem, stop using the projector immediately. Never try to repair the unit except in a controlled environment under trained supervision. Repairs carried out by unskilled people can lead to damage or malfunction of the unit, as well as exposure to dangerous laser light.
- Never connect this product to a dimmer pack.
- Make sure the power cord is not crimped or damaged.
- Never disconnect the power cord by pulling or tugging on the cord.
- Never carry a product from the power cord or any moving part. Always use the hanging/mounting bracket or the handles.
- Always avoid eye or skin exposure to direct or scattered light from this product.
- Lasers can be hazardous and have unique safety considerations. Permanent eye injury and blindness is possible if lasers are used incorrectly. Pay close attention to each safety REMARK and WARNING statement in this user manual. Read all instructions carefully BEFORE operating this device.
- Never intentionally expose yourself or others to direct laser light.
- This laser product can potentially cause instant eye injury or blindness if laser light directly strikes the eyes.
- It is illegal and dangerous to shine this laser into audience areas, where the audience or other personnel could get direct laser beams or bright reflections into their eyes.
- It is a US Federal offense to shine any laser at aircraft.
- No service allowed by customer. There are no user serviceable parts inside the unit. Do not attempt any repairs yourself.
- Service is only to be handled by the factory or authorized factory trained technicians.
- Product is not to be modified by the customer.
- Caution – use of controls or adjustments or performance of procedures other than those specified herein may result in hazardous radiation exposure.

---

## **LASER AND SAFETY NOTES**

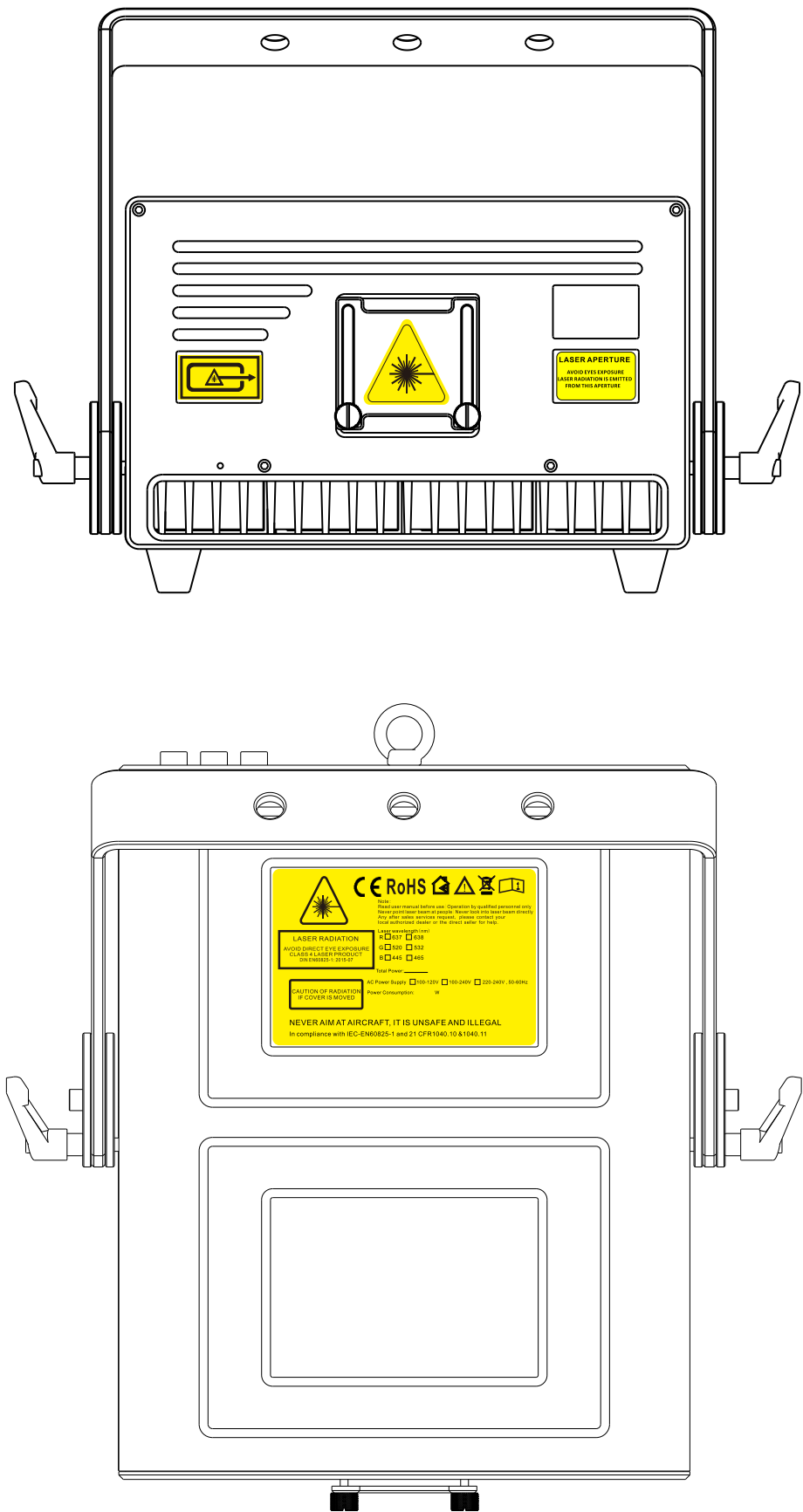
### **STOP AND READ ALL THE LASER SAFETY NOTES BELOW**

Laser Light is different from any other light sources with which you may be familiar. The light from this product can cause eye and skin injury if not set up and used properly. Laser light is thousands of times more concentrated than light from any other kind of light source. This concentration of light can cause instant eye injuries, primarily by burning the retina (the light sensitive portion at the back of the eye). Even if you cannot feel “heat” from a laser beam, it can still potentially injure or blind you or your audience. Even very small amounts of laser light are potentially hazardous even at long distances. Laser eye injuries can happen quicker than you can blink. It is incorrect to think that because these laser entertainment products use high speed scanned laser beams, that an individual laser beam is safe for eye exposure. It is also incorrect to assume that because the laser light is moving, it is safe. This is not true.

Since eye injuries can occur instantly, it is critical to prevent the possibility of any direct eye exposure. It is not legal to aim this laser projector into areas where people can be exposed. This is true even if it is aimed below people’s faces, such as on a dance floor.

- Do not operate the laser without first reading and understanding all safety and technical data in this manual.
- Always set up and install all laser effects so that all laser light is at least 3 meters (9.8 feet) above the floor on which people can stand. See the “Proper Usage” section later in this manual.
- After set up, and prior to public use, test the laser to ensure proper function. Do not use if any defect is detected.
- Laser Light - Avoid Eye or Skin Exposure to Direct or Scattered Light.
- Do not point lasers at people or animals.
- Never look into the laser aperture or laser beams.
- Do not point lasers in areas where people can potentially be exposed, such as uncontrolled balconies, etc.
- Do not point lasers at highly reflective surfaces, such as windows, mirrors and shiny metal objects. Even laser reflections can be hazardous.
- Never point a laser at aircraft, as this is a US Federal offense.
- Never point un-terminated laser beams into the sky.
- Do not expose the output optic (aperture) to cleaning chemicals.
- Do not use the laser if the housing is damaged, open, or if the optics appear damaged in any way.
- Never leave this device running unattended.
- In the United States, this laser product may not be purchased, sold, rented, leased or loaned for use unless the recipient possesses a valid Class 4 laser light show variance from the US FDA CDRH.
- This product must always be operated by a skilled and well-trained operator who is familiar with the data included in this manual. Note that use of this projector in the United States also requires a valid Class 4 laser light show variance from the CDRH as stated above.
- The legal requirements for using laser entertainment products vary from country to country. The user is responsible for the legal requirements at the location/country of use.
- Always use appropriate lighting safety cables when hanging this projector overhead.

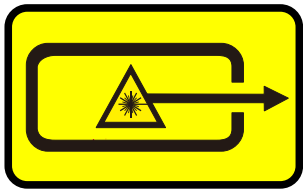
LABELLING REFERENCE



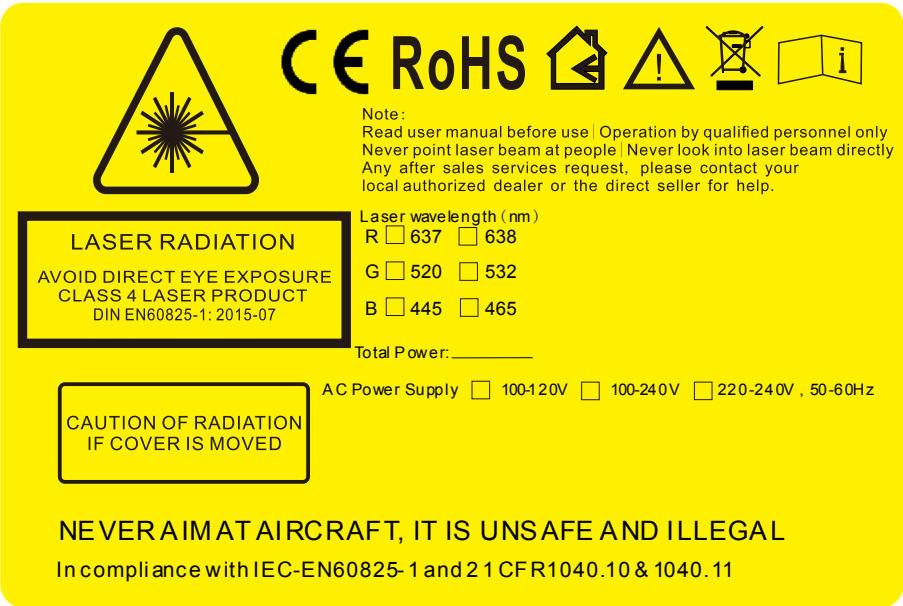
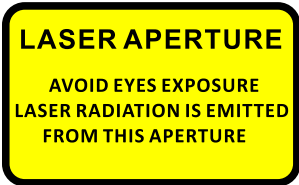
See the following reproductions of the product labels. All these labels must be intact and legible prior to be used on the projector.



Hazard warning symbol



Aperture steering label

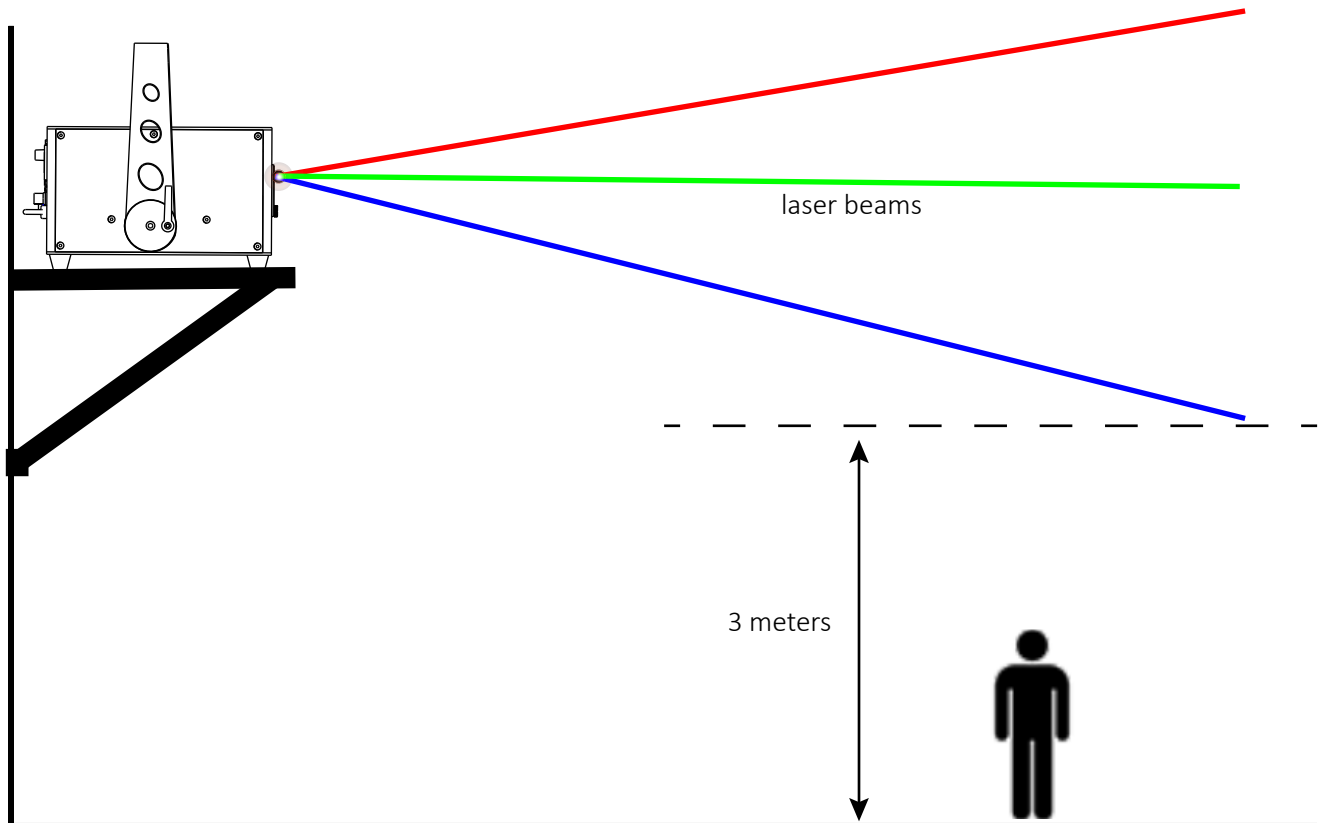


## PROPER USAGE

This product is for overhead mounting only. For safety purposes, this projector should be mounted on steady elevated platforms or sturdy overhead supports using suitable hanging clamps. In all cases, you must use safety cables.

International laser safety regulations require that laser products must be operated in the fashion illustrated below, with a minimum of 3 meters (9.8 ft.) of vertical separation between the floor and the lowest laser light vertically. Additionally, 2.5 meters of horizontal separation is required between laser light and audience or other public spaces.

The audience area can be passively protected by sliding the aperture cover plate upwards and fixing it in proper position by the two thumb screws.



## RIGGING

- Be sure that the structure onto which you are mounting this product can support its weight.
- Mount the product securely. You can do this with a screw, a nut, and a bolt. You may also use a mounting clamp if rigging this product onto a truss. The U-shaped support bracket has three mounting holes which may be used to secure the clamps to the projector.
- Always consider ease of access to the unit before deciding on a location for this product
- When mounting this product overhead, always use a safety cable.

Stainless steel cable(safety rope)





## OPERATIONS

PD SERIES units come with diode-based only laser sources and all sources have beam correction ,thus have great beam show with analog FULL colors modulation.

The PD SERIES units can be controlled over ILDA and have a built-in memory with preset patterns ,also with SD-card slot for freely programs export onto it, that can be easily triggered through DMX. They can also be operated in automatic and sound-to-light mode. The laser projector provides a master-slave-mode. Show lasers of the same series (slave projectors), connected via DMX to a main projector (master projector) project the same patterns like the master projector.

This Series will be applicable for clubs, bars, and those Small/medium venues or theater events, parties, business activities, large venues etc.

**"PD series** projectors are not supplied with standard "E-Stop Box" and "Remote Interlock bypass" Instead, a simplified "E-Stop Box" featured with "Mushroom switch" and "Key switch" will be supplied in the purchase accordingly to request.

The "E-stop Box" is generally with a CAT5 cable of 2m length unless there would be different requests.


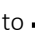
If user doesn't need additional "E-Stop Switch", Then the "RJ45 jack interlock connector" should be inserted into the rear plate of the projector's INTERLOCK position(with silkscreen INTERLOCK marking) ,only by this way user will be able to light up the laser projector during operations.

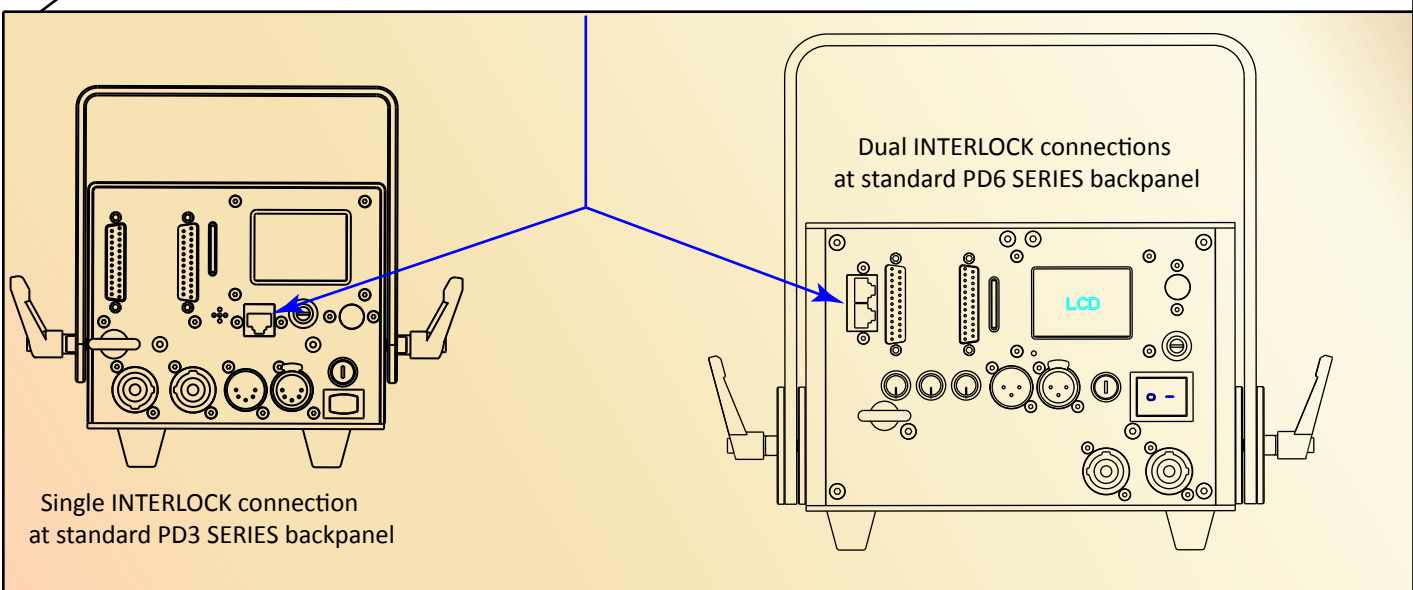


## Several steps to start up the laser projector(s)

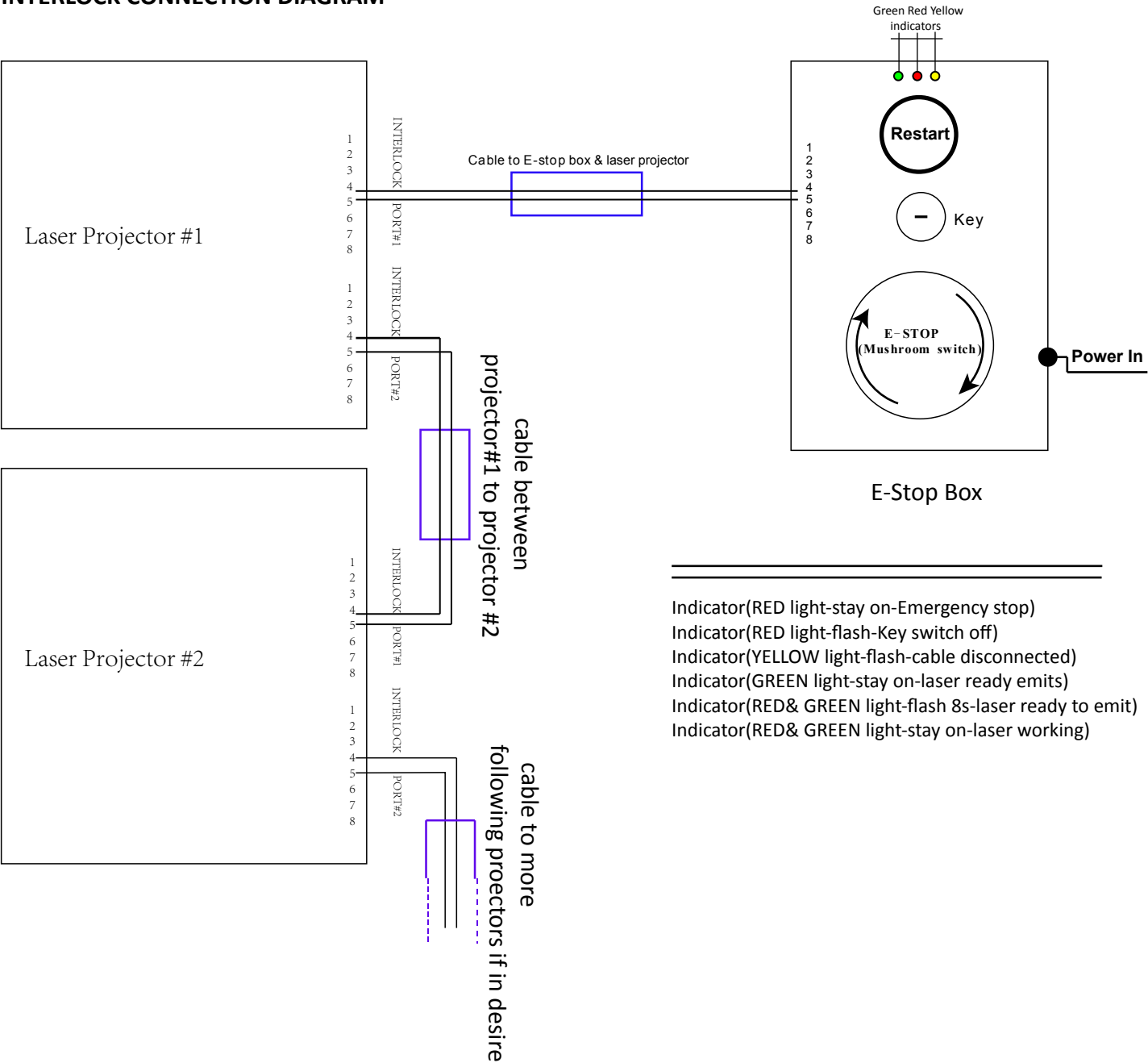
1. Use the included power cord to connect the laser device to a proper power outlet(AC100-240V, 50/60Hz)
2. Use one of the included keys( 2 sets included in the package, either one of them will work) to insert into the key-chassis and switch to the "ON" position
3. Use one of the the included INTERLOCK connectors to insert into the INTERLOCK position on the backplate of the device. (2 x RJ45 connectors(well made) included in the package)

**Remark:** There are 2 positions for INTERLOCK on the backplate of the devices  $\geq 10W$  herein, either one of the positions will work(one only position needs to be with INTERLOCK connector inserted if the laser projector will be used alone. Both INTERLOCK positions will work if user wants to daisy chain 2 or more laser projectors through **E-stop box**.

4. Turn on the power switch from  to , then the laser device will start output laser light.



INTERLOCK CONNECTION DIAGRAM



There may be a few models of the show systems that do not have the DUAL INTERLOCKS due to the limited space inside the compact size of the system to have the board assembled, therefore, remote interlock control in a low(daisy-chain) for them is not possible.

According to safety regulations in the US, CLASS 4 laser show systems must be equipped with the safety elements such as mechanical shutter plate to prevent a potential single laser beam shot.

We're capable of carrying out laser systems with such requirements, upon order request.

**Mechanical shutter plate**

**Laser beams at Galvoscaner's mirrors**

## LCD Display Setting introduction

### Note:

All the contents listed on the LCD display can be freely changed to the preferable status. The most important step is to “double-click” the menu knob to SAVE the preferred status when all selections/settings get done. (The other settings should be operated step by step as DMX setting reference as the guidance following)

### e.g. Default Status

①

DMX Address	1
Show Mode	ILD
Program	Program 1
SD file	No SD
SIZE	80
Phase Invert	X+ Y+
Scan Speed	30
DMX STATE	Show Mode
Slave Mode	Slave
X Phase	Positive
Y Phase	Positive
Laser Lock	Off
Sound sense	80
SD Sound	Off
LOAD FLASH	Off
Color	RGB
R	100
G	100
B	100
Language	English

Click the DMX column once and manually rotate the menu knob to change the DMX address(1-17 for options)

②

DMX Address	1
Show Mode	ILD
Program	Program 1
SD file	No SD
SIZE	80
Phase Invert	X+ Y+
Scan Speed	30
DMX STATE	Show Mode
Slave Mode	Slave
X Phase	Positive
Y Phase	Positive
Laser Lock	Off
Sound sense	80
SD Sound	Off
LOAD FLASH	Off
Color	RGB
R	100
G	100
B	100
Language	English

Double-click the menu knob to save the preferred status.(When this step done, the background of the status will turn to red)

③

DMX Address	1
Show Mode	ILD
Program	Program 1
SD file	No SD
SIZE	80
Phase Invert	X+ Y+
Scan Speed	30
DMX STATE	Show Mode
Slave Mode	Slave
X Phase	Positive
Y Phase	Positive
Laser Lock	Off
Sound sense	80
SD Sound	Off
LOAD FLASH	Off
Color	RGB
R	100
G	100
B	100
Language	English

Actual view of the LCD display gets lighten on, you need to rotate the menu knob to choose the needed status then make the preferable settings.

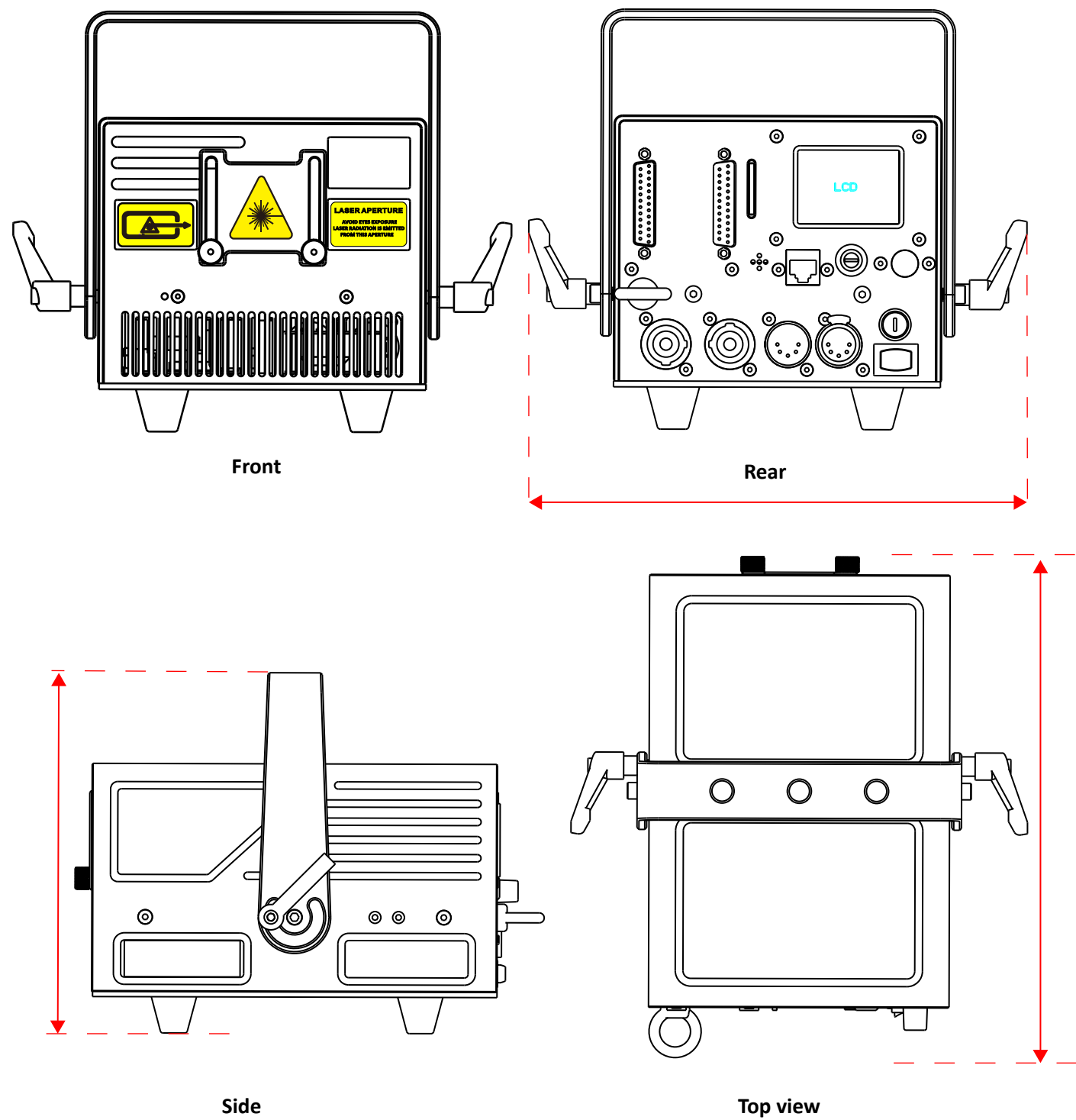


### Important Remark:

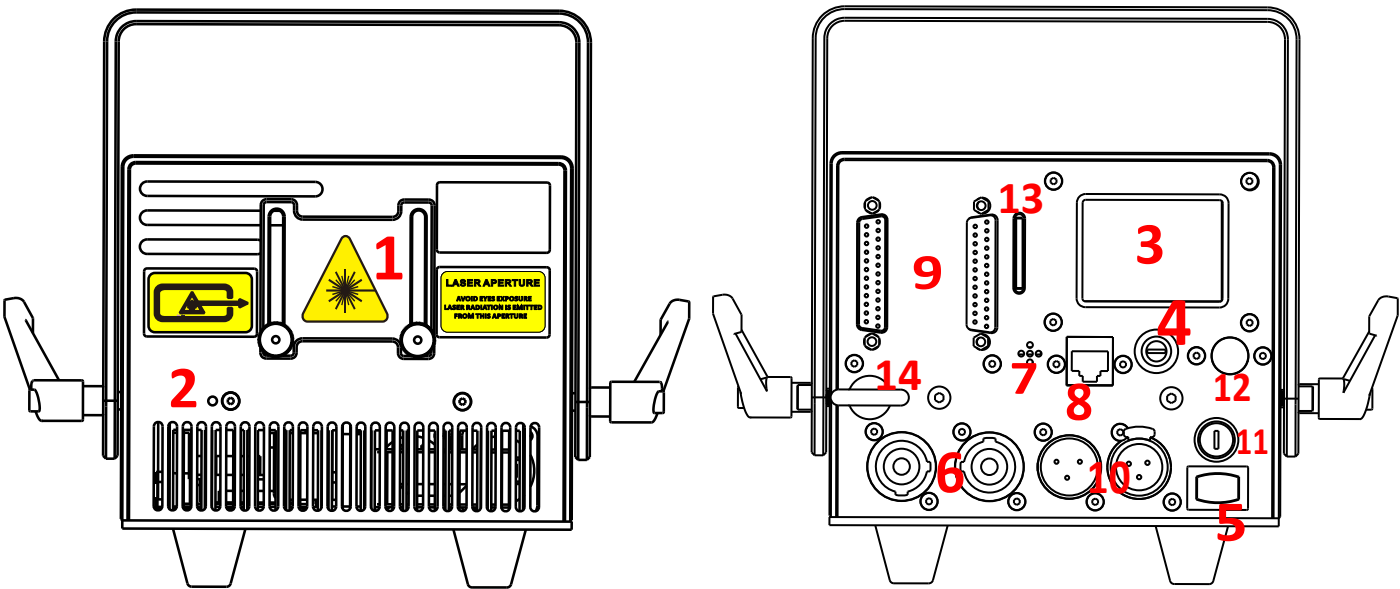
While there's no ILDA signal input and if you don't need the devices to run in AUTO mode, you can make the setting on “DMX STATE” from “Show-Mode” switching to “Black Out!” , then will bypass the “AUTO mode”.

PD3 SERIES

Standard Verisons(without FB4 built-in)



# INTRODUCTIONS of PD3 SERIES



1	Laser aperture	(covered by masking plate) DO NOT look directly into this aperture once the masking plate gets loosen
2	Laser Emission	When this indicator is lit up the laser system is ready to emit the laser radiation as soon as it receives instructions from control software.
3	LCD Display	Integrated with multi settings on the projector, please refer to detailed settings (on Page 11. ) for the LCD
4	Keyhole	Key Switch, laser output is available when the key is moved to position “on”
5	Power Switch	Power On/Off
6	PowerCON Input & Output	Power connections input and output
7	MicroPhone	Sound receiver
8	INTERLOCK (RJ45 jack)	Laser output is available only when the interlock is connected. It could be used to connect a laser emergency switch(E-stop box).
9	ILDA Input & Output	DB25 connections input and output for ILDA mode display
10	DMX Input & Output	3-pin DMX connections input and thru for DMX512 mode display
11	FUSE	Safety element; current rating 4amps
12	Menu knob for LCD Setting	The knob for the main settings on LCD, click it to wake the LCD and rotate it for corresponding status setting
13	SD-Card Slot	Slot for SD-Card which you may have your own laser files to export on
14	Safety Ring	The ring for enwinding a safety rope when the laser device will be installed on out-of-reach locations.

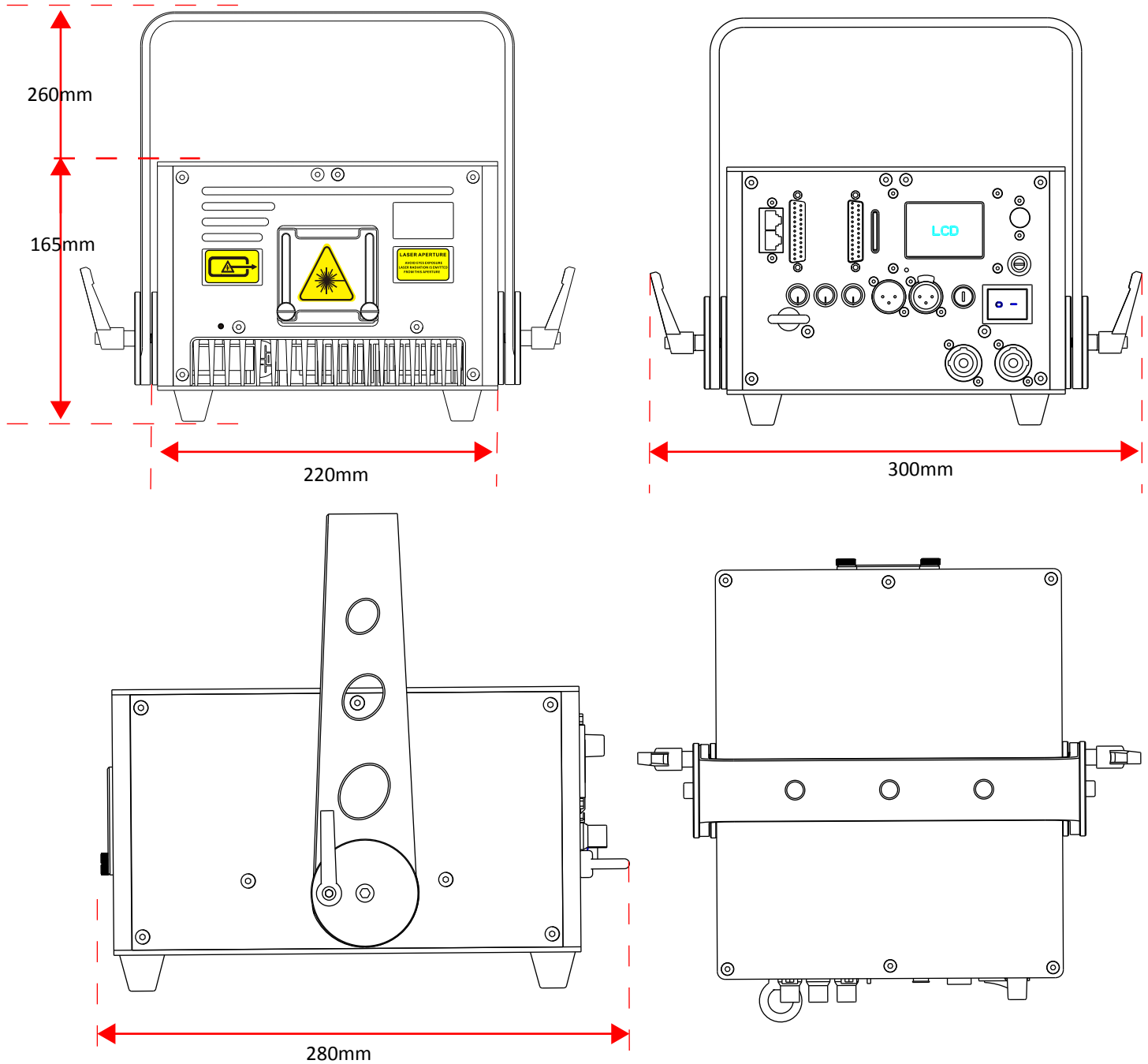
## Specifications of PD3 SERIES

<b>Type of Laser</b>	Pure diode-based full colors(semiconductor diode laser systems)
<b>Laser Classification</b>	Class 4
<b>Laser Power</b>	<div>638nm    520nm    445nm</div> <div>           PD3000-RGB R/650mW+G/900mW+B/1500mW            PD4000-RGB R/1200mW+G/900mW+B/1800mW            PD5000-RGB R/1500mW+G/1000mW+B/2500mW            PD6000-RGB R/1800mW+G/1100mW+B/3100mW         </div>
<b>Scanning-system</b>	40 kpps ILDA@8° , Scan angle Max 60°
<b>Beam Size@aperture</b>	2.5*6 mm
<b>Beam Divergence</b>	<1.1 mRad
<b>Modulation</b>	>60 KHz
<b>Power Supply</b>	AC 100-240V, 50/60Hz
<b>Power Consumption</b>	90-110W
<b>Net Weight</b>	4.26 kg
<b>Dimension</b>	156*224*125mm
<b>Controls</b>	Auto, Sound to light, SD-Card, DMX512 , ILDA
<b>Operation Temperature</b>	minus 20℃ to 40℃
<b>Protection Rating</b>	IP54
<b>Safety elements</b>	Keyed interlock, emission delay, magnetic interlock, scan-fail safety, mechanical shutter(on request), adjustable aperture masking plate.
<b>Important statement</b>	Due to Advanced Optical Correction technology used in our laser systems the optical power output of each laser colour within the system may slightly differ from the specification of respective laser module(s) installed. This does not affect the total guaranteed power output.



## PD6 SERIES

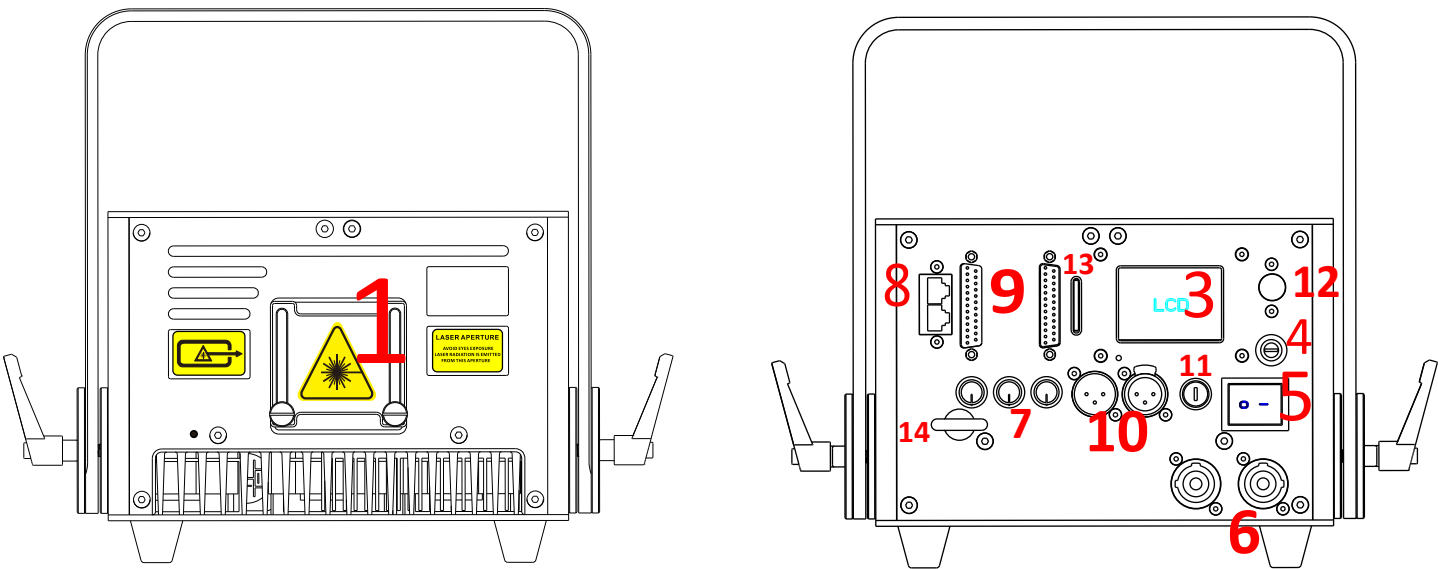
### Standard Versions(without FB4 built-in)



This enclosure covers RGB laser power rated 7W, 8W, 9W and 10W



# INTRODUCTIONS of PD6 SERIES



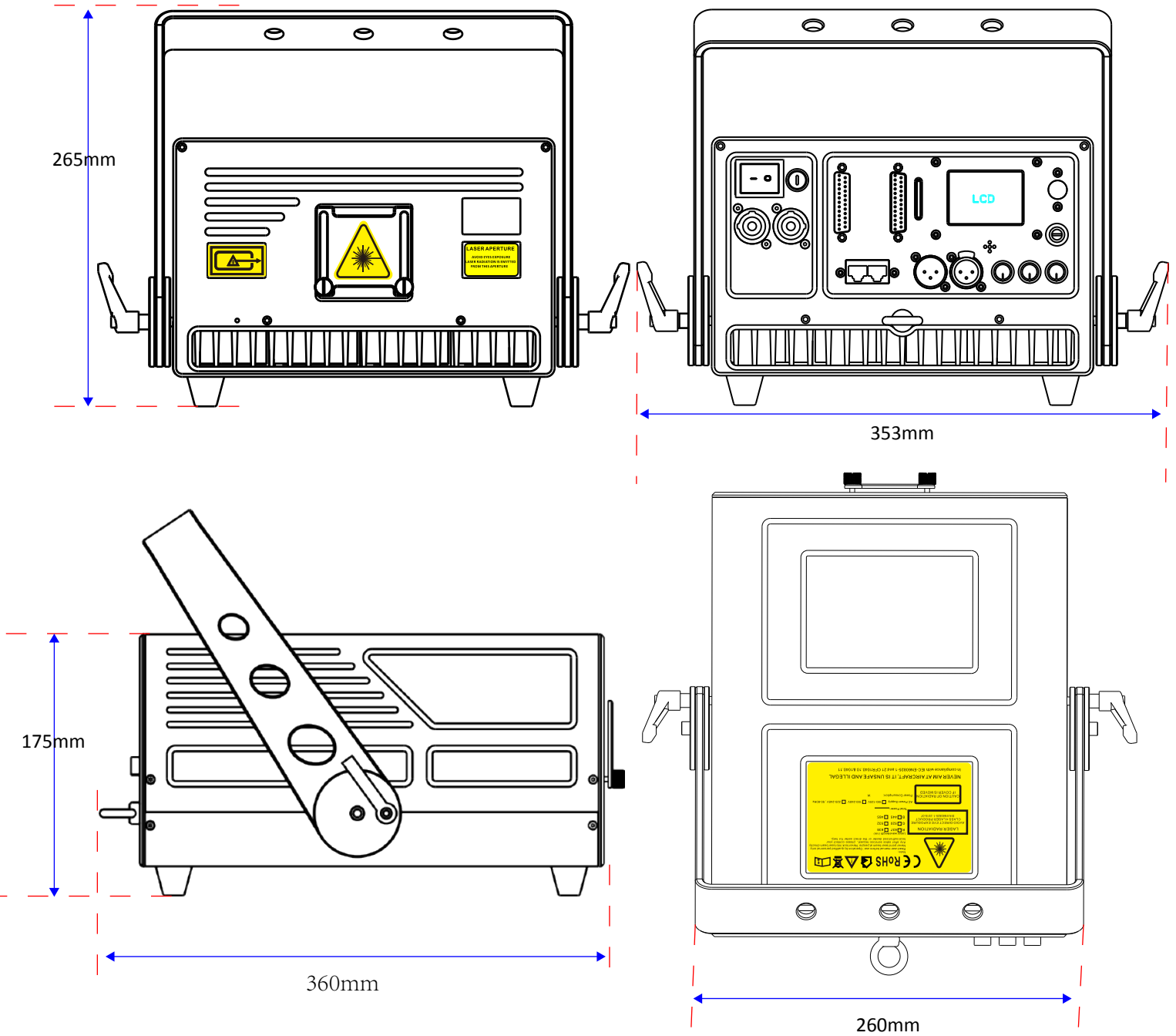
<b>1</b>	<b>Laser aperture</b>	(covered by masking plate) DO NOT look directly into this aperture once the masking plate gets loosen
<b>2</b>	<b>Laser Emission</b>	When this indicator is lit up the laser system is ready to emit the laser radiation as soon as it receives instructions from control software.
<b>3</b>	<b>LCD Display</b>	Integrated with multi settings on the projector, please refer to detailed settings (on Page 11. ) for the LCD
<b>4</b>	<b>Keyhole</b>	Key Switch, laser output is available when the key is moved to position “on”
<b>5</b>	<b>Power Switch</b>	Power On/Off
<b>6</b>	<b>PowerCON Input &amp; Output</b>	Power connections input and output
<b>7</b>	<b>Color intensity knobs</b>	R/G/B power intensity adjustment, rotate or anti-rotate to adjust power
<b>8</b>	<b>INTERLOCK (RJ45 jack)</b>	Laser output is available only when the interlock is connected. Both positions can be used to connect a laser emergency switch(E-stop box).
<b>9</b>	<b>ILDA Input &amp; Output</b>	DB25 connections input and output for ILDA mode display
<b>10</b>	<b>DMX Input &amp; Output</b>	3-pin DMX connections input and thru for DMX512 mode display
<b>11</b>	<b>FUSE</b>	Safety element; current rating 4amps
<b>12</b>	<b>Menu knob for LCD Setting</b>	The knob for the main settings on LCD, click it to wake the LCD and rotate it for corresponding status setting
<b>13</b>	<b>SD-Card Slot</b>	Slot for SD-Card which you may have your own laser files to export on
<b>14</b>	<b>Safety Ring</b>	The ring for enwinding a safety rope when the laser device will be installed on out-of-reach locations.

## Specifications of PD6 SERIES

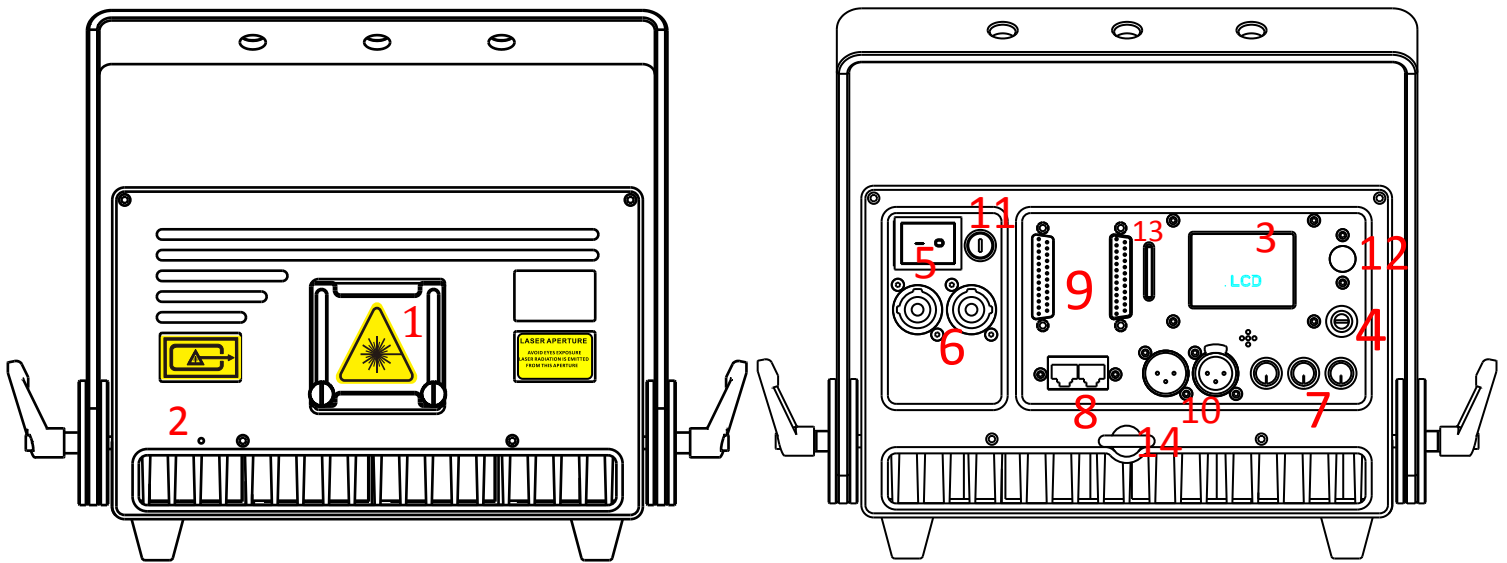
<b>Type of Laser</b>	Pure diode-based full colors(semiconductor diode laser systems)
<b>Laser Classification</b>	Class 4
<b>Laser Power</b>	<div>638nm    520nm    445nm</div> <div>PD7000-RGB    R/2000mW+G/2000mW+B/3000mW</div> <div>PD8000-RGB    R/2000mW+G/3000mW+B/3000mW</div> <div>PD9000-RGB    R/3000mW+G/3000mW+B/3000mW</div> <div>PD10000-RGB    R/3000mW+G/3000mW+B/4000mW</div>
<b>Scanning-system</b>	40kpps ILDA@8° , Scan angle Max 60°
<b>Beam Size@aperture</b>	3.5*6.5 mm
<b>Beam Divergence</b>	<1.1 mRad
<b>Modulation</b>	>60 KHz
<b>Power Supply</b>	AC 100-240V, 50/60Hz
<b>Power Consumption</b>	160W   160W   170W   180W
<b>Net Weight</b>	8.04 kg
<b>Dimension</b>	260*220*150mm
<b>Controls</b>	Auto, Sound to light, SD-Card, DMX512 , ILDA
<b>Operation Temperature</b>	minus 20℃ to 40℃
<b>Protection Rating</b>	IP54
<b>Safety elements</b>	Keyed interlock, emission delay, magnetic interlock, scan-fail safety, mechanical shutter, adjustable aperture masking plate.
<b>Important statement</b>	Due to Advanced Optical Correction technology used in our laser systems the optical power output of each laser colour within the system may slightly differ from the specification of respective laser module(s) installed. This does not affect the total guaranteed power output.

PD8 SERIES

Standard Versions(without FB4 built-in)



## INTRODUCTIONS of PD8 SERIES



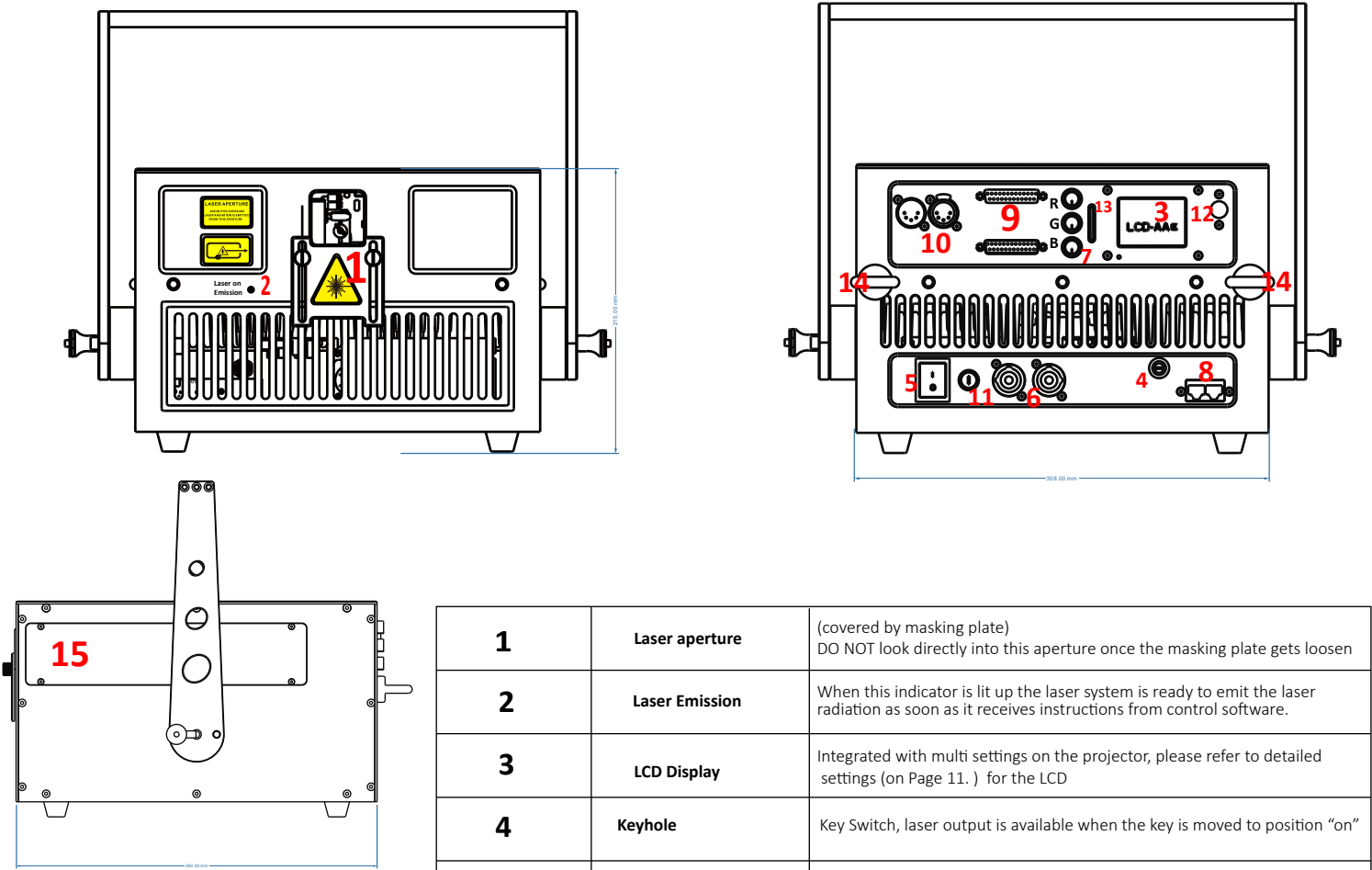
<b>1</b>	<b>Laser aperture</b>	(covered by masking plate) DO NOT look directly into this aperture once the masking plate gets loosen
<b>2</b>	<b>Laser Emission</b>	When this indicator is lit up the laser system is ready to emit the laser radiation as soon as it receives instructions from control software.
<b>3</b>	<b>LCD Display</b>	Integrated with multi settings on the projector, please refer to detailed settings (on Page 11. ) for the LCD
<b>4</b>	<b>Keyhole</b>	Key Switch, laser output is available when the key is moved to position “on”
<b>5</b>	<b>Power Switch</b>	Power On/Off
<b>6</b>	<b>PowerCON Input &amp; Output</b>	Power connections input and output
<b>7</b>	<b>Color intensity knobs</b>	R/G/B power intensity adjustment, rotate or anti-rotate to adjust power
<b>8</b>	<b>INTERLOCK (RJ45 jack)</b>	Laser output is available only when the interlock is connected. BotLaser output is available only when the interlock is connected.
<b>9</b>	<b>ILDA Input &amp; Output</b>	DB25 connections input and output for ILDA mode display
<b>10</b>	<b>DMX Input &amp; Output</b>	3-pin DMX connections input and thru for DMX512 mode display
<b>11</b>	<b>FUSE</b>	Safety element; current rating 8amps
<b>12</b>	<b>Menu knob for LCD Setting</b>	The knob for the main settings on LCD, click it to wake the LCD and rotate it for corresponding status setting
<b>13</b>	<b>SD-Card Slot</b>	Slot for SD-Card which you may have your own laser files to export on
<b>14</b>	<b>Safety Ring</b>	The ring for enwinding a safety rope when the laser device will be installed on out-of-reach locations.

## Specifications of PD8 SERIES

<b>Type of Laser</b>	Pure diode-based full colors(semiconductor diode laser systems)
<b>Laser Classification</b>	Class 4
<b>Laser Power</b>	<div>638nm    520nm    445nm</div> <div>PD12000-RGB    R/4000mW+G/4000mW+B/4000mW</div> <div>PD14000-RGB    R/4000mW+G/4000mW+B/6000mW</div> <div>PD15000-RGB    R/4000mW+G/4000mW+B/7000mW</div>
<b>Scanning-system</b>	40kpps ILDA@8° , Scan angle Max 60°
<b>Beam Size@aperture</b>	4.5*6.5 mm
<b>Beam Divergence</b>	<1.1 mRad
<b>Modulation</b>	>60 KHz
<b>Power Supply</b>	AC 100-240V, 50/60Hz
<b>Power Consumption</b>	270W   280W   290W
<b>Net Weight</b>	11.62kg
<b>Dimension</b>	320*250*160mm
<b>Controls</b>	Auto, Sound to light, SD-Card, DMX512 , ILDA
<b>Operation Temperature</b>	minus 20℃ to 40℃
<b>Protection Rating</b>	IP54
<b>Safety elements</b>	Keyed interlock, emission delay, magnetic interlock, scan-fail safety, mechanical shutter, adjustable aperture masking plate.
<b>Important statement</b>	Due to Advanced Optical Correction technology used in our laser systems the optical power output of each laser colour within the system may slightly differ from the specification of respective laser module(s) installed. This does not affect the total guaranteed power output.

# PD20 SERIES

## Standard Verisons(without FB4 built-in)



1	Laser aperture	(covered by masking plate) DO NOT look directly into this aperture once the masking plate gets loosen
2	Laser Emission	When this indicator is lit up the laser system is ready to emit the laser radiation as soon as it receives instructions from control software.
3	LCD Display	Integrated with multi settings on the projector, please refer to detailed settings (on Page 11. ) for the LCD
4	Keyhole	Key Switch, laser output is available when the key is moved to position “on”
5	Power Switch	Power On/Off
6	PowerCON Input & Output	Power connections input and output
7	Color intensity knobs	R/G/B power intensity adjustment, rotate or anti-rotate to adjust power
8	INTERLOCK (RJ45 jack)	Laser output is available only when the interlock is connected. BotLaser output is available only when the interlock is connected.
9	ILDA Input & Output	DB25 connections input and output for ILDA mode display
10	DMX Input & Output	3-pin DMX connections input and thru for DMX512 mode display
11	FUSE	Safety element; current rating 8amps
12	Menu knob for LCD Setting	The knob for the main settings on LCD, click it to wake the LCD and rotate it for corresponding status setting
13	SD-Card Slot	Slot for SD-Card which you may have your own laser files to export on
14	Safety Ring	The ring for enwinding a safety rope when the laser device will be installed on out-of-reach locations.
15	Alignment window	

## Specifications of PD20 SERIES

<b>Type of Laser</b>	Pure diode-based full colors(semiconductor diode laser systems)
<b>Laser Classification</b>	Class 4
<b>Laser Power</b>	<div> <div>638nm    520nm    445nm</div> <div> PD20000-RGB    R/5600mW+G/7000mW+B/8000mW  PD25000-RGB    R/7000mW+G/8000mW+B/10000mW  PD26000-RGB    R/9000mW+G/8000mW+B/7500mW  PD30000-RGB    R/8000mW+G/10000mW+B/12000mW </div> </div>
<b>Scanning-system</b>	35kpps ILDA@8° , Scan angle Max 60°
<b>Beam Size@aperture</b>	6.0*6.5 mm   7.0*6.5 mm   8.0*6.5 mm   7.0*6.5 mm
<b>Beam Divergence</b>	<0.95 mRad
<b>Modulation</b>	>60 KHz
<b>Power Supply</b>	AC 100-240V, 50/60Hz
<b>Power Consumption</b>	400W   450W   500W   500W
<b>Net Weight</b>	19.50 kg
<b>Dimension</b>	360*308*215mm
<b>Controls</b>	Auto, Sound to light, SD-Card, DMX512 , ILDA
<b>Operation Temperature</b>	minus 20℃ to 40℃
<b>Protection Rating</b>	IP54
<b>Safety elements</b>	Keyed interlock, emission delay, magnetic interlock, scan-fail safety, mechanical shutter, adjustable aperture masking plate.
<b>Important statement</b>	Due to Advanced Optical Correction technology used in our laser systems the optical power output of each laser colour within the system may slightly differ from the specification of respective laser module(s) installed. This does not affect the total guaranteed power output.

---

## Display mode introduction

- \*Audio Mode(Sound mode): Preset programs triggered by sound, any proper sound will enable laser to output.
  - \*Auto Mode: The preset programs automatically display in Auto mode.
  - \*Prg Mode(SD playback in order): The preset/exported programs playback in sequence. Redact of the playlist please refer to **SD Card Introduction**.
  - \*ILD Mode(SD loop playback): Loop playback the single ILD file (extension named .ILD).  
About .ILD format, please refer to **SD Card Introduction**.
- Notice:** the ILD here refers to playing the ILD file in the SD card, not the ILDA signal though software on computer.

**DMX Mode:** International standard DMX512 signal. In any of the above playback modes, the device can automatically recognize and switch to DMX mode after accessing DMX signal. The device has 17 DMX channels. Refer to DMX Table for details.

DMX consoles vary in different manufacturers' models. Please refer to the specific DMX console instructions.

**ILDA (PC) mode:** International standard ILDA signal is under computer control. In any of the above operating modes, when an ILDA signal with an interlock function is connected, the ILDA(computer) signal control has priority and the device will be displaying laser cues, programs in accordance to the ILDA signal output from laser controller on the PC.

In ILDA mode, a control hardware will be required, the recommended one should be FB3 controller from Pangolin, yet we can also provide this part with fair cost when purchase laser systems from here.

The ILDA software(laser controller) has different operating methods from different manufacturers. Please refer to the specific ILDA software instructions, to our experience the most commonly and widely being used is QuickShow from Pangolin.com.

## SD Card Introduction

- \*The system accepts only FAT32 file, formatting the new SD card to FAT32 type is required before use it.
- \*Short file / File folder names , the file names is limited to 8 digits and the expanded name is limited with 3 digits, the names could only contain English letters, Arabic numbers, and underline, the others could not be recognized.
- \*Equipped an exclusive SD card for the device and don't save the other files inside; the quantity for the file folders is limited with 20, and each file folder is limited to contain 256 ILD files and 10 PRG files at maximum.
- \*PRG playlist: user could edit the playlist by text editor, the expanded name of the playlist is .PRG format.  
The playlist is constituted by file name, play speed, and play times, "i" is the identification code stand for iShow, and comma "," is used to separate it.

Edit only one program each line; for example, if a program prg1.prg contains 3 files:

file1.ild,

file2.ild,

and file3.ild; play speed for file1.ild is 12K and repeated 3 times; play speed for file2.ild is 20k and play once, the file 2 was produced by iShow; play speed for file3.ild is 18K and repeated 4 times; and the contents of the prg1.prg is as below:

File1.ild,12,3

File2.ild,20,1,i

File3.ild,18,4

- \*After creating a file folder, do create a PRG file under this file folder by the same file name, and edit all the playing files into this PRG file, the speed edited here is the play speed in ILDA mode. For Example, create the file folder "Lasershow", and create the file "Lasershow.prg" under this folder; after adding a new ILDA file, we need to add this ILDA file to this PRG playlist, so that we could find this file correctly in the ILDA mode and play it by required speed

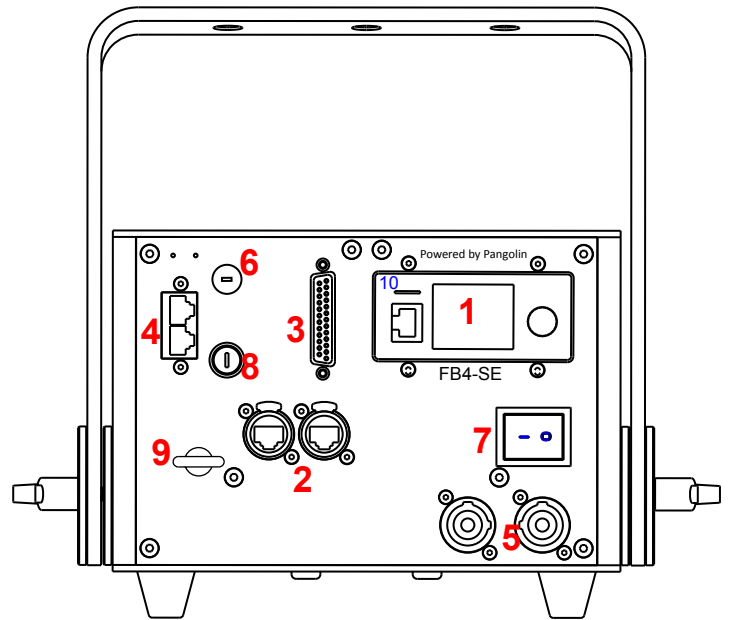
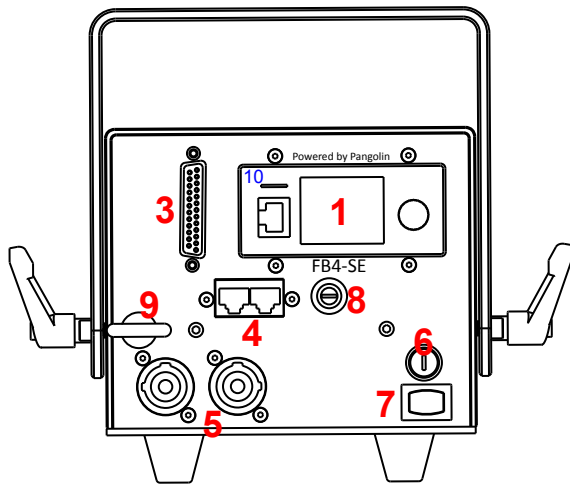


## DMX Chart

CH1	Mode selection	0-49	Auto			
		50-99	Sound			
		100-149	Play PRG files in sequence			
		150-199	Play ILD file circularly			
		200-255	Manual			
CH2	Graphics/Files Folder selection	0-255	Manual	PRG & ILD mode		
			Graphics selection	File Folder selection		
			every 3 value each graphic			
CH3	Strobe	0-10	None	File playing selection		
		11-199	Auto, from slow to fast			
		200-255	Sound control			
CH4	Colors selection	0-5	Off			
		6-16	White	6-10	ILD file color	
				11-16	white	
		17-33	Red			
		34-50	Green			
		51-67	Blue			
		68-84	Yellow			
		85-101	Purple			
		102-118	Cyan			
		119-135	White, Red, Green, and Blue in segmenting			
		136-152	Blue, Yellow, Purple, and Cyan in segmenting			
		153-169	White, red, green, blue, yellow, purple, and cyan in segmenting			
		170-186	White, red, green, blue in flowing			
		187-203	Blue, yellow, purple, and cyan in flowing			
		204-220	White, red, green, blue, yellow, purple, and cyan in flowing			
		221-237	In segmenting according to the breaking point of the graphics			
		238-255	Change colors by sound			
		CH5	Display Mode	0-63	Normal	
				64-127	Light dots	
128-191	By segment					
192-255	Dots					
CH6	X axis Movements	0-125	Manual Operation			
		126-185	Auto. left and right circularly			
		186-225	Auto jumping left and right circularly			
		226-245	Auto irregular jumping			
		246-255	Irregular jumping by sound control			
CH7	Y axis Movements	0-125	Manual			
		126-185	Auto. Up & Down circularly			
		186-225	Auto Up & Down jumping circularly			
		226-245	Auto irregular jumping			
		246-255	Irregular Jumping by sound control			

CH8	Zooming	0-10	None
		11-87	Manual zooming
		88-150	Zoom+
		151-200	Zoom-
		201-255	Circular
CH9	X axis rotation	0	None
		1-128	Manual
		129-255	Auto
CH10	Y axis rotation	0	None
		1-128	Manual
		129-255	Auto
CH11	Centre rotation	0	None
		1-128	Manual
		129-192	Auto rotation clockwise
		193-255	Auto rotation anti-clockwise
CH12	Drawing	0-10	None
		10-74	Manual adjusting
		75-104	Auto (increasing)
		105-144	Auto (decreasing)
		145-184	Auto circularly
		185-224	Loop circularly (increasing)
		225-255	Loop circularly (decreasing)
CH13	X axis Wave	0-9	None
		10-69	Low amplitude
		70-129	Medium amplitude
		130-189	Large amplitude
		190-255	Maximum amplitude
CH14	Y axis Wave	0-9	None
		10-69	Low amplitude
		70-129	Medium amplitude
		130-189	Large amplitude
		190-255	Maximum amplitude
CH15	Red modulation/Dimming	0-255	From the brightest to off
CH16	Green modulation/Dimming	0-255	From the brightest to off
CH17	Blue modulation/Dimming	0-255	From the brightest to off

# FB4 integrated Devices

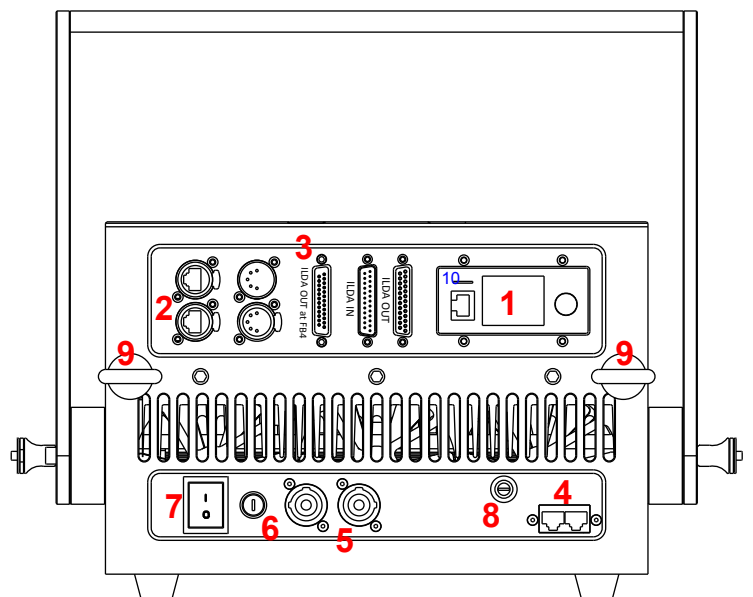
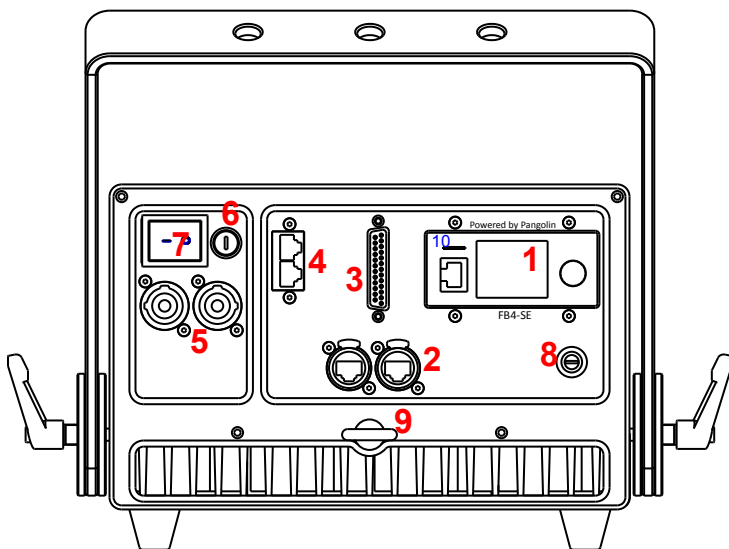


## REMARK:

There's no LAN Switch built-in on the small devices (PD3 SERIES) so, only the LAN port (RJ45) at FB4 is available.

The other bigger units will normally come with LAN switch built-in, and EtherCON in & out are available, with the silkscreen LAN1 ,LAN2 on the back panel.

INTRODUCTIONS FOR THE BACK PANELS AS FOLLOING PAGE!



# INTRODUCTIONS of FB4 INTEGRATED DEVICES

1	FB4 Area	FB4 controller’s interface is integrated with featured functions, setting area.
2	LAN 1 & LAN 2	Signal comes frrom FB4
3	ILDA OUT at FB4	Sub-DB25 connection, signal comes from FB4. Directly wired to FB4 board thus this ILDA output can be used to daisy chain the other laser projectors which are not FB4 integrated
4	INTERLOCK Connections	Laser output is available only when the interlock is connected. Both positions can be used to connect a laser emergency switch(E-stop box).
5	PowerCON in & out	Power connections input and output
6	FUSE	Safety element; current rating dffers for different SERIES of the show systems
7	Power Switch	Power On/Off
8	Keyhole	Key Switch, laser output is available when the key is moved to position “on”
9	Safety Ring	The ring for enwinding a safety rope when the laser device will be installed on out-of-reach locations.
10	SD-Card Slot	Memory card slot on FB4 controller

## INTRODUCTIONS OF RE-ALIGNMENTS. REF.

Laser combinations would be misaligned because of many external factors e.g. lasers got fallen from height, or shocking during transportation, long time of being used, etc.

All of these factors would cause the well aligned lasers out of shape, misaligned.

If there would be any necessary to re-do RGB alignments, there are many procedures to be completed in a high powered RGB laser module. Because each single laser color has more than 1 only diode get combined, thus a RGB high power module would have many permutations and combinations on alignment procedures.

Generally, if the single color are stay still(overlay itself),end users would need to do the basic alignments on RGB balance only. Please read the steps as described herein for reference of how to make alignments on this module:

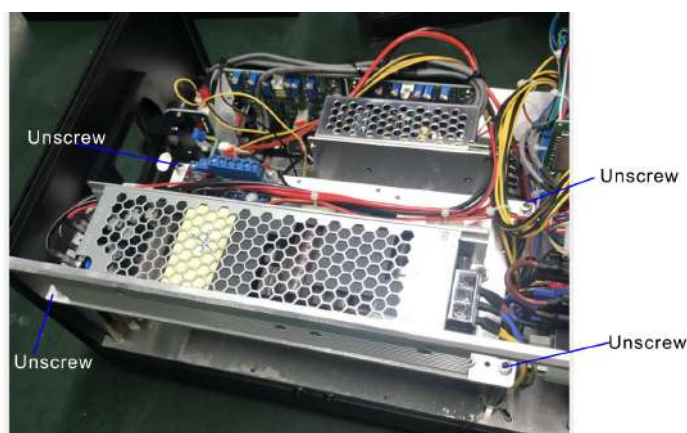
The very first step is to judge by eyes visual if the RGB(white balance) out of shape. Easy to know whether lasers are misaligned or not from projecting a white circle, you will then see if the white balance is with slight or severe splitting.

Pictures below were taken from the 15W system and its RGB laser module.

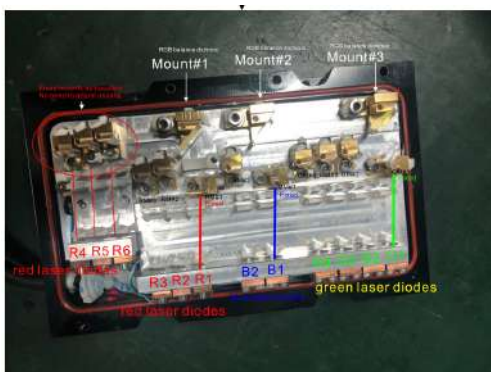
**Step 1.** Cut off all power supply

**Step 2.** Open up the cover of the laser show system then access to overall internal of the system.

Laser module is set under the power supply unit, you should unscrew this power supply unit with its baseplate and put them on the other side in the system.



**Step 3.** After removing the power supply unit, we'll see the laser module. Next is to open up the cover of the module. Slightly remove the 8 screws fixed on the module's cover, and will get to the internal of the core laser diodes & optics.



As mentioned above, the laser combinations would have slight splitting only because each single color is still well aligned, so you just need to do adjustments on the basic procedures of bringing back white balance.

**Step 3-1.** That is to slightly remove the glue fixed on the RGB balance dichro mounts #1 thru #3 and then make some slight adjustments of the 3 mounts until achieve a good white beam(need to power on).

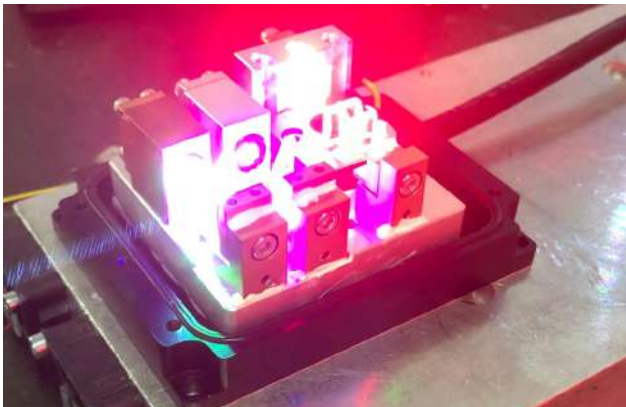
By powering on the laser to judge if we have obtain white balance, just be careful not to access any electricity to yourself. WEARING insulating gloves to do all these works is suggested.

**Step 3-2.** The smaller optic mounts for each single color laser combinations are not suggested to make any adjustments on them, especially the ones are marked 'Fixed' as picture view. If you had confirmed that either of the 3 different single laser colors is out of shape too, take red laser as example, the necessary way is to make adjustments on the smaller mounts of RM#2 and RM#3, the fixed RM#1 shouldn't be adjusted, neither to the green and blue lasers.

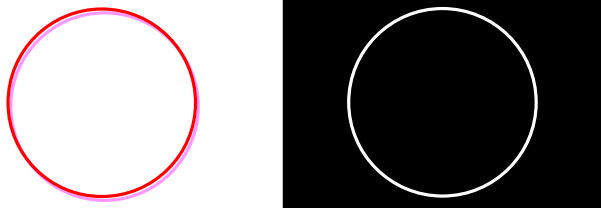
Important Reminder:

To make alignments, the lasers should be kept in dry condition, so that will avoid moisture get inside the laser module. Moist or any bad environments will impact the lasers' performance and service time.

1. Open the projector's topcover and remove it.  
Next, it requires to open the RGB module's cover too, then you will see the laser diodes layout inside as picture below.



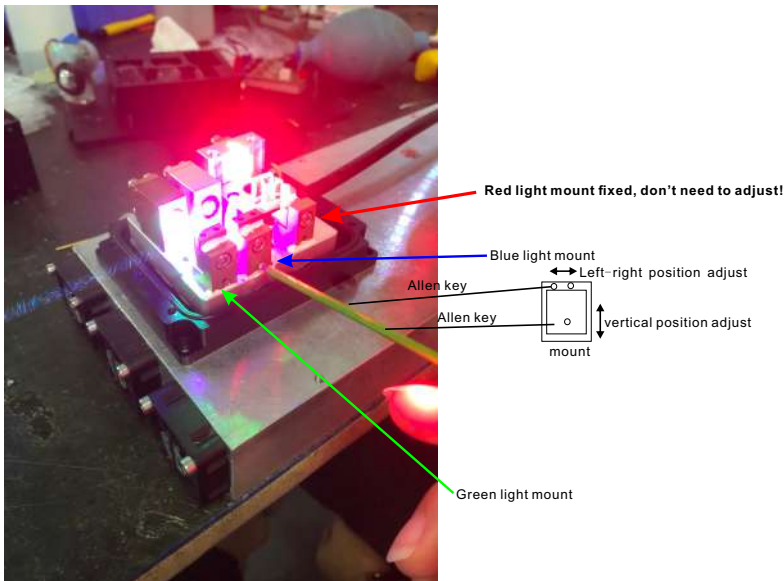
2. Create a full size white circle (static tunnel effect) and check whether the green and blue circle are total out of the red circle. If yes, we will see the colors split each other. Next step is to redo alignment for the Green and Blue beam to overlay on the red beam. Slightly adjust the green and blue until the all three colors well overlay on each other to become the white color circle.



Detailed beam alignment steps:

2-1. Adjust the Blue beam--as pictures shown  
Use a proper allen key insert the slot places on side of the blue light mount and then slightly pry the mount on vertical position, while you can use the allen to pry the both slots place on top of the mount--repeat left or right side to adjust the beam's position. So that to make the blue beam layout with the red beam, keep this action until both light paths(blue & red) overlay each other's centre well.

2-2. Adjust the Green beam should be same as the procedures that adjust the Blue beam



---

### **Maintenance Instruction**

The device is mostly installed in the location that there is dust, haze, and smoke, which are easily pollute the lens and decrease the output brightness; these particles also easily pollute the light case, fans, PCBA, block the heat dissipation, and reduce the stability of the electronic components; so the regular cleaning is very necessary and important to keep the maximum light output and increase the stability and lifetime. It is recommended to clean the window lens, outside case, and fans every 2 weeks, and clean the internal of the stage light every 4 weeks; the cleaning frequency should be higher in the severe working condition.

#### **Note:**

Only an qualified & authorized technician(s ) is(are) allowed to clean the internal parts, improper operations for the internal cleaning could cause serious damage to the device. It is forbidden to use the corrosive chemicals to clean the device, the pure alcohol and acetone is recommended to clean the lens.

Clean the lens carefully and gently, don't touch the lens by any hard and sharp materials.

#### **After sales service and warranty**

- \* One year's warranty for the device.
- \* The components and accessories costs are charged after the warranty period.
- \*Warranty voids for the damages or injuries caused by force majeure, like, earthquake, typhoon, and so on.
- \*Warranty voids for the damages or injuries caused by improper operation and projection, such as wrong input voltage, water immerse, physical shock, and so on